

Regarding Landscapes



What is your relationship with the Landscape?

Stimulating, enjoyable and instructive **Landscape Perception Workshops** in the beautiful and sunny landscapes of the foothills of the French Pyrenees. Here you will come to meet nature and yourselves in many different creative ways.

Each day we will go out and explore beautiful and varied landscapes and their meanings for you, by walking, direct observation, experimental exercises, drawing, study and conversation.

What do plants tell us - about themselves, about their surroundings, and about us?

Plant Observation within the Landscape: 30 April - 7 May 2011 with Karina Hendriks

How far is the landscape a product of nature and culture? And what are we?

Nature and Culture: 23-30 July 2011 with Karina Hendriks

How do we experience landscapes and why can we experience them as beautiful?

Sense Perception and Aesthetics: 13 - 20 Aug 2011

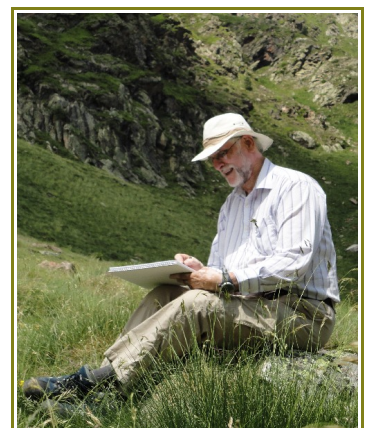
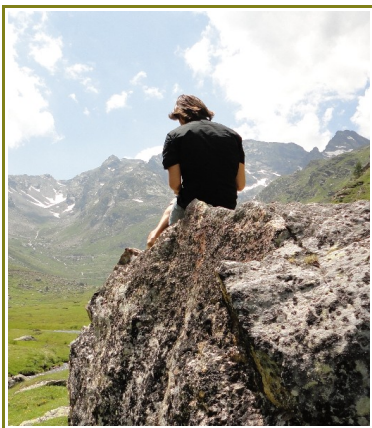
Here you will have the opportunity to acquire or enhance your skills in landscape painting.

Landscape Painting Course: 28 Aug - 4 Sept 2011 with Ben Stolk

In what way has our experience of landscape changed throughout history and in our own biography?

Evolution of Consciousness: Sept / Oct 2011 with Simon Blaxland-de Lange

All courses will include the above-mentioned themes, but in each workshop we will explore one of them in more depth. Each day we will be working with the 'Legible Landscape' manual.



Adriaan Luijk, Le Fort, 09300 Lieurac, France. Tel 0033 (0) 5 61 05 27 60

www.regarding-landscapes.com